





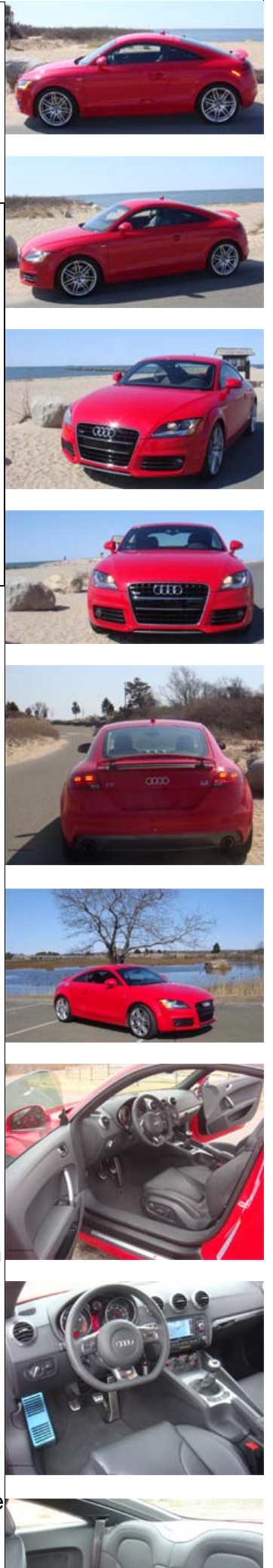
Car Reviews And News.com

**2008 Audi TT Coupe**

**The Good :**) Exciting exterior and interior. Very fast. Superbly built. Great driving feel. A car that you remember.

**The Bad :**( Seats are too sporty and not comfortable enough. Could use more exhaust note. Needs better fuel economy.

|                 |                                            |                                                                                                                                                                                                                |
|-----------------|--------------------------------------------|----------------------------------------------------------------------------------------------------------------------------------------------------------------------------------------------------------------|
| Engine          | 6Cyl 3.2 Liter                             | Videos: A Video of this vehicle can be found at the bottom of this page. For higher quality click on the links below.                                                                                          |
| Output          | 250 hp @6300rpm<br>236 lb-ft @2500-3000rpm |                                                                                                                                                                                                                |
| Top Speed       | 130 mph Limited in USA                     |  Watch this vehicle in Quicktime format and watch on your iPod or watch our Podcast ( .mov format) <a href="#">Click Here</a> |
| 0-60 mph        | 5.2 sec (est.)                             |                                                                                                                                                                                                                |
| Weight          | 3,218 lbs                                  |  Download Apple QuickTime viewer <a href="#">here</a> .                                                                      |
| Price As Tested | \$50,225                                   |  <a href="#">YouTube Channel</a> - Click Here                                                                               |
|                 |                                            | To download this article in pdf format to your computer, <a href="#">click here</a> .                                                                                                                          |



The second generation Audi TT has been carefully redesigned and improved upon with an eye on keeping the iconic design of the first generation firmly in place. The original design of the TT was so far ahead of its time even when it was first introduced back in 1999. What many considered a concept car was actually available to the world. The original TT won many design awards and became an instant hit with the motoring public. Going back to the table to create the second generation TT must have been impossible task for both designers and engineers who had to fill the legacy of the first version. The second generation retains the same basic style and shape but sharpens the edges for the 21st century. About five inches longer and three inches wider, the TT has grown but still retains a sports car attitude. Audi also improved on weight by using light weight aluminum which helps keep it competitive on the performance front with the Porsche Boxster.

Behind the wheel the engine and steering wheel offer loads of input to the driver. The TT's steering is very precise and quick. The clutch is light and forgiving with the engaging point being about half way through its travel distance. The engine sounds powerful and revs very fast through first and second gears putting a smile on your face every time you push the gas. With Quattro permanent all-wheel-drive you move forward with an even push, no pulling or pushing here. Put everything together and you have truly fun daily driver. Everything from the engine to the transmission is very smooth and very quick. You feel connected with the car and the push of power from the get-go is amazing.

The Audi 3.2 Liter V6 is one amazing engine, offering power and sending you to sixty in 5.3 seconds. With 250 horsepower and 236 lb-ft of torque between 2500 and 3000 rpm you have plenty of power early in the rev band. Audi choose to emphasize the intake sounds at all engine speeds over exhaust notes. However, if there is one downside to the entire car is that there is hardly any exhaust note. We expected a nice throaty grumble when accelerating hard however all we got is a minuscule note in the high end of the RPM range. Most drivers wouldn't bother taking the car above 6000 RPM just to hear some sound. The TT suspension is perfectly suited for aggressive driving. Driving fast through S-curves feels wonderful. The car beckons

you to toss it around corners. The firm setting on the magnetic ride control offers you more road feel than in the normal setting giving you a 'oh my gosh' feeling as you drive. Brakes work amazingly well at stop the car on a dime. With a hard stomp of the brakes the TT stops much like a Formula One car.

The exterior of our TT coupe in Brilliant Red is simply HOT. The body lines are striking with smooth panels on the sides and curvaceous front and rear ends. We loved the smooth slant of the rear hatch and the slightly downward tilting tail lamps as they wrap around the sides of the TT. The 19 inch wheels are stunning with a multi-spoke design revealing the powerful brake disc. The front end is a mixture of a frenzied monster and a silky dancer wrapped up all together. The headlights look stunning and offer waves for your eyes to follow up along the sides of the TT. Small badges signify the S-line package which includes the larger 19 inch wheels, Nappa leather sport seats, aggressive bumpers with front and rear diffusers and the awesome race-car like steering wheel that is cut squarely at the bottom. The tail end is also fitted quite nicely with a lower valence which wraps around the twin tailpipes. You do not have to be going over 75 mph to view the TT with its rear wing open, just press a button and gasp at its beauty.

The new space frame makes use of aluminum heavily throughout the car with 69% being aluminum and 31% being steel. This makes the coupe a full 48% lighter than an equivalent body built of steel. Lift the front hood and you can feel the difference easily.

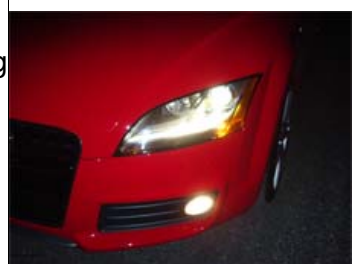
Inside you have a cabin that feels like a well made Swiss watch. Everything is functional and not over the top. Touches of real aluminum trim look very nice and remind the driver that he's in a sports car. There is good use of leather and also a hard grainy trim which compliments the mixture of upscale yet not over the top feel. With a tall roof the driver feels enclosed in a cabin that feels quite secure.

The sharp look of the aluminum trimmed interior is carried nicely to the instrument cluster which offers a beautiful glow and at night looks even better. In the center of the cluster is a digital display which shows you trip computer information and stereo and telephone information. The optional S-line steering wheel is also wonderful with perforated leather used on the sides and a flat bottom. The wheel offers easy to use dials which allow fast control and selection of stereo channels and is one of the best we have ever used. There is also a voice control dial which works with the telephone; wouldn't it be great if it functioned with the navigation, climate control and stereo as well?

The navigation system with its large screen is a great feature to have and one option that you should add to your vehicle. It is one of the best systems we have tested and allows for easy input by phone number or map selection along with the traditional street address or zip code input. The display is very bright and the colorful maps are beautifully displayed. By opting for the navigation system you also get visual displays for the stereo and phone. The quick stereo selection was a great feature along with having the ability to see many channels on one screen with their station ID and song title appearing as well. The speed at which you can change stations makes for a very useful system, something that VW should learn from. The screen also flips to allow you to insert 2 memory cards full of music. We even liked the Ipod storage spot in the dash which plugs into the bottom of an Ipod or Iphone and allows you to view music in the screen and change music easily with the steering wheel dials; you never have to take your hands off the wheel. We found the stereo system to be quite good offering good bass levels and clear sound with 140 watts of power with nine speakers.

Below the navigation system is the climate control area with separate controls for heated seats. The automatic system works well and keeps you warm without blowing heat directly in your face. We liked the beautiful red glow on the dials which gave the interior a lava lamp look. Also great was the fact that all buttons inside have a similar clicking sound which is great for night time driving allowing you to keep your eyes on the road. Go for a test drive at dusk and you will be highly impressed.

Around the shift lever you have buttons for setting the suspension to sport mode. The magnetic suspension operates by altering the electrical charge inside a fluid filled





with tiny magnets making the ride firm or soft as you like. This makes the ride very flat and quite stiff for those times when you want to be on a race track or just feel like it. The ESP can be turned off should you desire and the rear wing can be manually lowered or raised. A cool feature when you want to show off.

The TT also features electro-mechanical Servotronic steering for easy control around town and precise control at high speeds. It features a dampening of road surfaces and returns to center faster when turning making the TT feel that much crisper when you are behind the wheel. The vehicle also keeps the brakes dry by tapping the discs when they are not needed. With Brake Assist, the TT provides full brake force when it senses urgency and this helps avoid accidents since most people never step hard enough on the brakes.

Inside the cabin we found the rear seats to be only big enough for pets or very small kids. There is very little headroom thanks to the sloping roof line which makes it quite dangerous should something happen when adults are sitting back there. The front seats do not move forward quickly and so it takes a bit of time to get in back as well. This is really a two person sports car. We did like the fact that the two rear seats can be folded down making for lots of room in the rear trunk area for larger items. The front seats are a bit too sporty for most people's tastes. We would have liked it better if they were adjustable so that you could tighten or loosen the side bolsters as you desired. Doors are quite heavy and feel very solid as do all the parts on the TT which is what you are paying the high sum of money for.

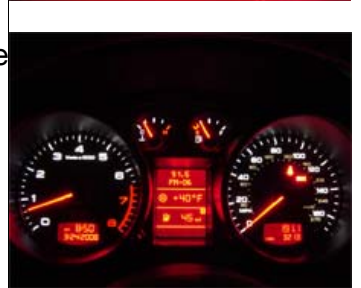
The Bi-Xenon headlamps turn with the road giving more light in the actual path you are traveling. This system is a must have and we think this is one of the best new technologies to enter the auto market in a long time. You now have significantly brighter lamps thanks to Bi-Xenon headlights with the ability to see through a curve. Other good features found on the TT include a side turn indicator light that blinks three times when you touch the stalk one time. LED lights in the side mirrors also do a better job of indicating you are turning and are much brighter than standard bulbs. A coming home feature turns on the headlamps and interior lights when you unlock the vehicle, making the path brighter and making it easier to find your vehicle in a dark parking lot.

For 2008 you can now also do a European Delivery of your Audi TT. Starting your ownership experience in Bavaria is a real life changer. Order a car by way of European Delivery and you can have all the fun you want in Europe on the Autobahn, and then have it shipped back at your local dealer for pickup in a few weeks.

Safety features are all here with ESP, ABS, ASR, LED indicator lights and a LED 3rd brake light as well as a tire pressure monitoring system. Driver and front passenger front, thorax side, and knee Air Bags protect you from impacts. A four year and 50,000 mile warranty protects your new investment and there is also a 12 year warranty against corrosion and a no charge first scheduled maintenance. Four year roadside assistance is also provided.



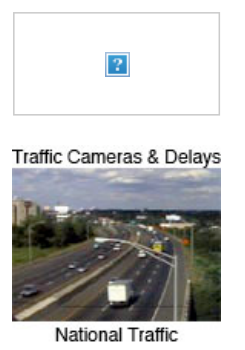
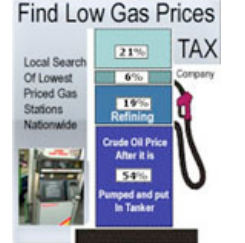

Our test car started off at a base price of \$41,500 for the 3.2 model. The S line sport package added \$3000 to the bill with fine Nappa leather, 19 inch alloy wheels, S line bumpers and steering wheel as well as headlight washers. The Audi navigation system with Ipod interface was \$1950. A magnetic ride suspension costs \$1400. Add \$800 for the Bi-xenon adaptive lights. Bluetooth phone preparation was \$450. The backup parking signals were \$350. Add to this a destination charge of \$775 and our total car came to \$50,225. Fuel economy was rated at 17 city and 24 highway on the window sticker though we managed to get about 18 in mixed performance oriented driving. Audi really should be moving this number up soon using any new technology it can find including Hydrogen injection using water.

The TT features almost all of its parts coming from Germany with only 1% coming from the US. The final assembly point is Gyor, Hungary. Both the engine and transmission are from Germany.




| PRICING                                                                                                                                                                                                                                                              | INVOICE  | RETAIL   |
|----------------------------------------------------------------------------------------------------------------------------------------------------------------------------------------------------------------------------------------------------------------------|----------|----------|
| Base Pricing                                                                                                                                                                                                                                                         | \$38,596 | \$41,500 |
| Destination                                                                                                                                                                                                                                                          | \$775    | \$775    |
| PQX S Line Sport Package Includes 19" x 9" 7-double spoke alloy wheels with 255/35R19 performance tires, S line grille, bumpers, door sills, steering wheel, badges, and gray front diffuser, silver interior stitching and headlight washer nozzles. REQUIRES Black | \$2,790  | \$3,000  |
| PND Audi Navigation Plus w/6-Disc CD-Changer                                                                                                                                                                                                                         | \$1,813  | \$1,950  |
| 1BL Audi Magnetic Ride Suspension                                                                                                                                                                                                                                    | \$1,303  | \$1,400  |
| PX3 Bi-Xenon Adaptive Headlights                                                                                                                                                                                                                                     | \$745    | \$800    |
| 9ZG Bluetooth Phone Preparation                                                                                                                                                                                                                                      | \$418    | \$450    |
| 7X1 Audi Parking System                                                                                                                                                                                                                                              | \$325    | \$350    |

|                                                      | COMPARISONS 2008 Audi TT                     | 2008 Porsche Cayman      | 2008 BMW 3 Series                  | 2008 Mercedes-Benz SLK-Class                                  | 2008 Infiniti G35              |
|------------------------------------------------------|----------------------------------------------|--------------------------|------------------------------------|---------------------------------------------------------------|--------------------------------|
|                                                      | 3.2 quattro 2dr Hatchback AWD (3.2L 6cyl 6M) | 2dr Coupe (2.7L 6cyl 5M) | 328xi 2dr Coupe AWD (3.0L 6cyl 6M) | Mercedes-Benz SLK-Class SLK280 2dr Convertible (3.0L 6cyl 6M) | Sport 4dr Sedan (3.5L 6cyl 6M) |
| <b>MSRP</b>                                          | \$41,500                                     | \$49,400                 | \$37,100                           | \$44,150                                                      | \$32,650                       |
| <b>Invoice</b>                                       | \$38,596                                     | \$43,075                 | \$34,130                           | \$41,060                                                      | \$30,030                       |
| <b>Destination Charge</b>                            | \$775                                        | \$860                    | \$775                              | \$825                                                         | \$715                          |
| <b>True Cost To Own</b>                              | TT                                           | Cayman                   | 3 Series                           | SLK-Class                                                     | G35                            |
| <b>Basic</b>                                         | 4 yr. / 50000 mi.                            | 4 yr. / 50000 mi.        | 4 yr. / 50000 mi.                  | 4 yr. / 50000 mi.                                             | 4 yr. / 60000 mi.              |
| <b>Drivetrain</b>                                    | 4 yr. / 50000 mi.                            | 4 yr. / 50000 mi.        | 4 yr. / 50000 mi.                  | 4 yr. / 50000 mi.                                             | 6 yr. / 70000 mi.              |
| <b>Roadside</b>                                      | 4 yr. / Unlimited mi.                        | 4 yr. / 50000 mi.        | 4 yr. / Unlimited mi.              | Unlimited yr. / Unlimited mi.                                 | 4 yr. / 60000 mi.              |
| <b>Rust</b>                                          | 12 yr. / Unlimited mi.                       | 10 yr. / Unlimited mi.   | 12 yr. / Unlimited mi.             | 4 yr. / 50000 mi.                                             | 7 yr. / Unlimited mi.          |
| <b>Pounds smog-forming pollution per 15000 miles</b> | 12.3 - 12.9                                  | 12.3 - 12.9              | 12.3 - 12.9                        | 7.9 - 11.8                                                    | 12.3 - 12.9                    |

[More Info](#)

[Add To Cart](#)



[More Info](#)  




[More Info](#)  




[More Info](#)  




[More Info](#)  




[More Info](#)  


|                                         |                                            |                                      |                                            |                                      |                                         |
|-----------------------------------------|--------------------------------------------|--------------------------------------|--------------------------------------------|--------------------------------------|-----------------------------------------|
| <b>Base Engine Type &amp; Cylinders</b> | V6                                         | flat 6                               | inline 6                                   | V6                                   | V6                                      |
| <b>Base Engine Displacement</b>         | 3.2 liters                                 | 2.7 liters                           | 3.0 liters                                 | 3.0 liters                           | 3.5 liters                              |
| <b>Valvetrain</b>                       | 24 Valves double overhead cam (DOHC)       | 24 Valves double overhead cam (DOHC) | 24 Valves double overhead cam (DOHC)       | 24 Valves double overhead cam (DOHC) | 24 Valves double overhead cam (DOHC)    |
| <b>Horsepower</b>                       | 250 hp @ 6300 rpm                          | 245 hp @ 6500 rpm                    | 230 hp @ 6500 rpm                          | 228 hp @ 6100 rpm                    | 306 hp @ 6800 rpm                       |
| <b>Torque</b>                           | 236 ft-lbs. @ 2500 rpm                     | 201 ft-lbs. @ 4600 rpm               | 200 ft-lbs. @ 2750 rpm                     | 221 ft-lbs. @ 2700 rpm               | 268 ft-lbs. @ 4800 rpm                  |
| <b>Driven Wheels</b>                    | all wheel drive                            | rear wheel drive                     | all wheel drive                            | rear wheel drive                     | rear wheel drive                        |
| <b>Active Suspension</b>                | Optional                                   | Optional                             | Not Available                              | Not Available                        | Not Available                           |
| <b>Convertible Roof</b>                 | Not Available                              | Not Available                        | Not Available                              | power retractable hard top           | Not Available                           |
| <b>Power Steering</b>                   | electric speed-proportional power steering | speed-proportional power steering    | speed-proportional power steering          | speed-proportional power steering    | speed-proportional power steering       |
| <b>Premium Center Console Trim</b>      | alloy and leather                          | leather - Optional                   | wood                                       | alloy                                | alloy                                   |
| <b>Premium Dash Trim</b>                | alloy                                      | leather                              | wood                                       | alloy                                | alloy                                   |
| <b>Premium Door Trim</b>                | alloy and leather                          | leather                              | wood                                       | alloy and leather                    | alloy and leather                       |
| <b>Premium Shift Knob Trim</b>          | alloy and leather                          | leather                              | Being Researched                           | leather                              | alloy and leather                       |
| <b>Premium Steering Wheel Trim</b>      | leather and alloy                          | leather-wrapped                      | leather and alloy                          | leather-wrapped                      | leather-wrapped                         |
| <b>Parking Assist</b>                   | rear parking sensors - Optional            | rear parking sensors - Optional      | rear parking sensors - Optional            | Not Available                        | Not Available                           |
| <b>Anti-Theft Alarm System</b>          | remote anti-theft alarm system             | remote anti-theft alarm system       | Not Available                              | remote anti-theft alarm system       | remote anti-theft alarm system          |
| <b>Premium Brand Speakers</b>           | Bose - Optional                            | Bose - Optional                      | Not Available                              | harman/kardon - Optional             | Bose - Optional                         |
| <b>CD In-Dash</b>                       | 6 CD player                                | single CD player                     | single CD player                           | single CD player                     | 6 CD player                             |
| <b>Remote CD Changer (# CDs)</b>        | 6 - Optional                               | 6 - Optional                         | Not Available                              | 6 - Optional                         | 6 - Optional                            |
| <b>Navigation System</b>                | DVD navigation system - Optional           | DVD navigation system - Optional     | DVD navigation system w/voice activation - | DVD navigation system - Optional     | hard drive navigation system - Optional |

## Optional

**SPECS**

|                                 |              |                  |                  |               |              |
|---------------------------------|--------------|------------------|------------------|---------------|--------------|
| <b>Turning Circle</b>           | 36 ft.       | 36.4 ft.         | 38.7 ft.         | 34.5 ft.      | 35.4 ft.     |
| <b>Max. Cargo Capacity</b>      | 23 cu. ft.   | 15 cu. ft.       | Being Researched | 10 cu. ft.    | 14 cu. ft.   |
| <b>EPA Mileage Estimates</b>    |              |                  |                  |               |              |
| <b>City</b>                     | 17 mpg.      | 20 mpg.          | 17 mpg.          | 17 mpg.       | 17 mpg.      |
| <b>Highway</b>                  | 24 mpg.      | 29 mpg.          | 25 mpg.          | 25 mpg.       | 25 mpg.      |
| <b>Length</b>                   | 164.5 in.    | 172.1 in.        | 181.1 in.        | 160.7 in.     | 187 in.      |
| <b>Width</b>                    | 72.5 in.     | 70.9 in.         | 70.2 in.         | 70.4 in.      | 69.8 in.     |
| <b>Height</b>                   | 53.2 in.     | 51.4 in.         | 54.9 in.         | 51 in.        | 57.2 in.     |
| <b>Weight</b>                   | 3218 lbs.    | 2866 lbs.        | 3582 lbs.        | 3215 lbs.     | 3532 lbs.    |
| <b>Wheel Base</b>               | 97.2 in.     | 95.1 in.         | 108.7 in.        | 95.7 in.      | 112.2 in.    |
| <b>Front Headroom</b>           | 37.7 in.     | 37.8 in.         | 37.1 in.         | 37.9 in.      | 40.5 in.     |
| <b>Rear Headroom</b>            | 32.6 in.     | Not Available    | 36.1 in.         | Not Available | 37.7 in.     |
| <b>Front Shoulder Room</b>      | 53.2 in.     | 51.5 in.         | 55.3 in.         | 52.2 in.      | 55.6 in.     |
| <b>Rear Shoulder Room</b>       | 47.5 in.     | Not Available    | 51.9 in.         | Not Available | 55.2 in.     |
| <b>Front Leg Room</b>           | 41.1 in.     | Being Researched | 41.8 in.         | 42.5 in.      | 43.9 in.     |
| <b>Rear Leg Room</b>            | 29.2 in.     | Not Available    | 33.7 in.         | Not Available | 34.7 in.     |
| <b>Maximum Luggage Capacity</b> | 13.1 cu. ft. | 14.5 cu. ft.     | 11.1 cu. ft.     | 9.8 cu. ft.   | 13.5 cu. ft. |

►Talk about this car and other cars on our message board with other car fans like you. [click here](#)

►To sign up to receive new car updates and reviews as well as some coupons for our site, [click here](#)

►Do you want to see what parts and accessories are made specifically for this vehicle today? [click here](#)



Copyright © 2008 Carreviewsandnews.com